



**COUNTY OF NEVADA
COMMUNITY DEVELOPMENT AGENCY
PLANNING DEPARTMENT**

950 MAIDU AVENUE, SUITE 170, NEVADA CITY, CA 95959-8617
(530) 265-1222 FAX (530) 265-9851 <http://new.nevadacounty.com>

Steven L. DeCamp
Community Development Agency Director

Brian Foss
Interim Planning Director

MEMORANDUM

DATE: February 6, 2012

TO: Interested Public/Private Agencies

FROM: Tod Herman, Senior Planner

RE: Notice of Preparation of an Environmental Impact Report (EIR) for the application of Teichert Aggregates for a Use Permit (U11-008) to expand their Boca Quarry operation from approximately 40 acres to approximately 158 acres, moving into the western region of the 230-acre site, and a Reclamation Plan (RP11-001) to restore the mined area to a safe, stable, and usable condition following the mining activities. The Boca Quarry is located north of Interstate 80, approximately one mile northeast of Hirschdale.

The Nevada County Planning Department will be the lead agency and will prepare an EIR for the project referenced above. Pursuant to Section 15082 of the CEQA Guidelines, we request that you provide comments which pertain to your agency's statutory responsibilities in response to the proposed project and its potential environmental effects. To assist your evaluation, please review the following project description, listing of possible environmental effects, and exhibits.

PROJECT LOCATION:

The Boca Quarry is located in eastern Nevada County, approximately one mile northeast of the Hirschdale community, east of the Town of Truckee. The project site is situated in portions of Sections 26 and 27 of Township 18 North and Range 17 East on the 7.5 minute Boca USGS topographic quadrangle. Figures 1 and 2 display the regional location as well as a recent aerial photograph of the project site, respectively. The project includes Assessor Parcel Numbers 48-090-12 and 48-200-03. Site elevations range from approximately 5,700 to 6,200 feet above mean sea level.

The Nevada County Assessors Office identifies the project site as Assessors Parcel Numbers (APN) 48-090-12 and 48-200-03. The project site is situated in portions of Sections 26 and 27 of Township 18 North and Range 17 East on the 7.5 minute Boca USGS topographic quadrangle.

PROJECT DESCRIPTION:

The proposed project plans to expand existing mining operations in the currently permitted Boca Quarry (U06-012). The application includes a Conditional Use Permit (U11-008) as well as a Reclamation Plan modification (RP11-001) to correspond with the proposed mine expansion and the importation of clean fill material for pit backfilling. The project will increase the existing extraction area of approximately 40 acres, to an extraction area of approximately 158 acres on the 230-acre site. The mining plan envisions removal of approximately 13 million cubic yards of material in three phases over a 30-year period.

The permit modification proposes to expand the site's extraction and production from 100,000 to 1,000,000 tons of aggregate per year, depending on local market demand. Blasting is also requested with this proposal. The proposed quarry expansion will continue to use, and eventually realign, the West Hinton Road haul route to Stampede Meadows Road for all of its aggregate transport and operating equipment access. The estimated life of the quarry will be 60 years. Until it is closed by the County, Hinton Road to the south will remain open for employee use, winter month site access, and emergency use. An amendment to the original Reclamation Plan is proposed to bring the new extraction area into compliance with Nevada County Codes and the California Surface Mining and Reclamation Act of 1975.

The proposed project area is subject to the General Plan Land Use designation of Forest (FR) and is zoned Forest (FR) with a Mineral Extraction (ME) combining district (FR-160-ME). The conditions of the Nevada County Zoning Code allow surface mining operations within this zone when an ME combining overlay is in place, along with an approved CUP and an approved Reclamation Plan.

Project Phasing

The project proposes to extend the quarrying activities into the western portion of the property in three phases. Phase I involves the conclusion of mining in the East Pit, which is largely complete. Phases II and III will involve mining of the West Pit. During Phase II, the lower (southern) portion of the West Pit will be mined to its maximum width and depth. The upper ridge of the West Pit will then be mined (Phase III), and the overburden from the ridge will be moved down to the lower area to be used as backfill in the lower pit, facilitating partially concurrent reclamation of the lowest bench (Phase II).

Mining activities in the expanded permit area will be initiated with salvage of the uppermost layer of soil using dozers and/or scrapers; the available soil will be stockpiled for use in future reclamation activities. The permit seeks to use blasting as a means to cut into the bedrock slope and to reduce the size of the rock product for ease of transport to the processing area and for further crushing to its required size (depending upon the market needs). All blasting activities will be performed by a licensed explosives contractor, who will bring the materials to the site for each blast. No storage of blasting materials will occur on site.

Processing

The rock processing area will remain in its present location, as permitted in U06-012, and will continue in this location throughout the three phases of the quarry mining operation. The processing site is situated behind a small knoll which provides a shield for both the sight and noise associated with the plant to the nearest resident over a mile away. This area will continue to be used for storing the raw product (unprocessed), processing the product into a series of stockpiles where each pile contains a different specification of aggregate, loading of the aggregate into trucks, and the scaling activities for each truck (before and after) the sale. The loaded trucks will then leave the site via the West Hinton Road haul route.

Operating Schedule

The plant generally operates on a single-shift basis during the period from May 1 through October 31, six days per week. Based upon market demand or emergency needs, such as flood response, the quarry might open earlier or continue operations later than the dates mentioned above, but would not exceed 180 operating days per year. Mining, processing, sales, and truck transport from the site would generally take place between 6 a.m. and 6 p.m. Monday through Friday, and between 7 a.m. and 4 p.m. on Saturday.

Reclamation

The goal of the reclamation plan is to return the site to a safe, stable, and usable condition after the mining activities have ceased. The intended end use for this site is an open space and timber woodland habitat. The reclamation process has several steps. Initially, as the extraction areas within the west pit are cleared, all of the topsoil that can be salvaged will be transported to an interim staging area where it will be kept and protected from erosion due to wind and rain. The soil storage areas will also be augmented with other material imported into the site (from offsite construction jobs). Once the mining activities have finished within an area (starting with the east pit), the benches and flattened areas will be backfilled as necessary (to achieve the final slope configuration) and then covered with the topsoil/soil mix. The soil areas will then be broadcast seeded with native shrubs and grasses. Revegetation of the final surfaces is intended to consist of vegetation types and species similar to the existing vegetation at the project site. Following the mining activities, all stationary and mobile equipment will be removed from the site. As required by the Surface Mining and Reclamation Act of 1975 (SMARA), a financial assurance for the total costs of reclaiming all of the disturbed areas will be required.

Mining Equipment

The proposed types of mobile equipment and machines to be employed at the quarry will remain the same as those that are currently in use. These include: a dozer, self-loading scraper, front-end wheel loader, portable water pump, motor grader, conveyers, haul trucks, and a hydraulic excavator. A water truck is used for the maintenance of the surfaces and dust control. The fixed equipment at the site includes screens, conveyors, an office building, and the scale.

PROJECT APPROVALS:

Conditional Use Permit (U11-008)
Reclamation Plan Modification (RP11-001)
Certification of Environmental Impact Report (EIR11-001)

PROBABLE ENVIRONMENTAL EFFECTS:

Nevada County, as Lead Agency under the California Environmental Quality Act (CEQA), has decided that the potential exists for significant environmental effects to occur with implementation of the proposed project and, therefore, will prepare an EIR. We need to know your views as to the scope and content of the EIR as well as any statutory responsibilities that your agency may have in conjunction with the subject project.

The following subject areas will be addressed in the EIR:

Aesthetics, Air Quality, Biological Resources, Cultural Resources, Geology/Soils, Greenhouse Gas Emissions, Hydrology & Water Quality, and Transportation/Traffic.

Due to the time limits mandated by state law, your response must be sent at the earliest possible date, but not later than thirty (30) days after receipt of this notice. Please send your response to my attention at the address shown below. We will also need the name of a contact person for your agency. If you have any questions regarding this notice, please do not hesitate to contact me at the office number above.

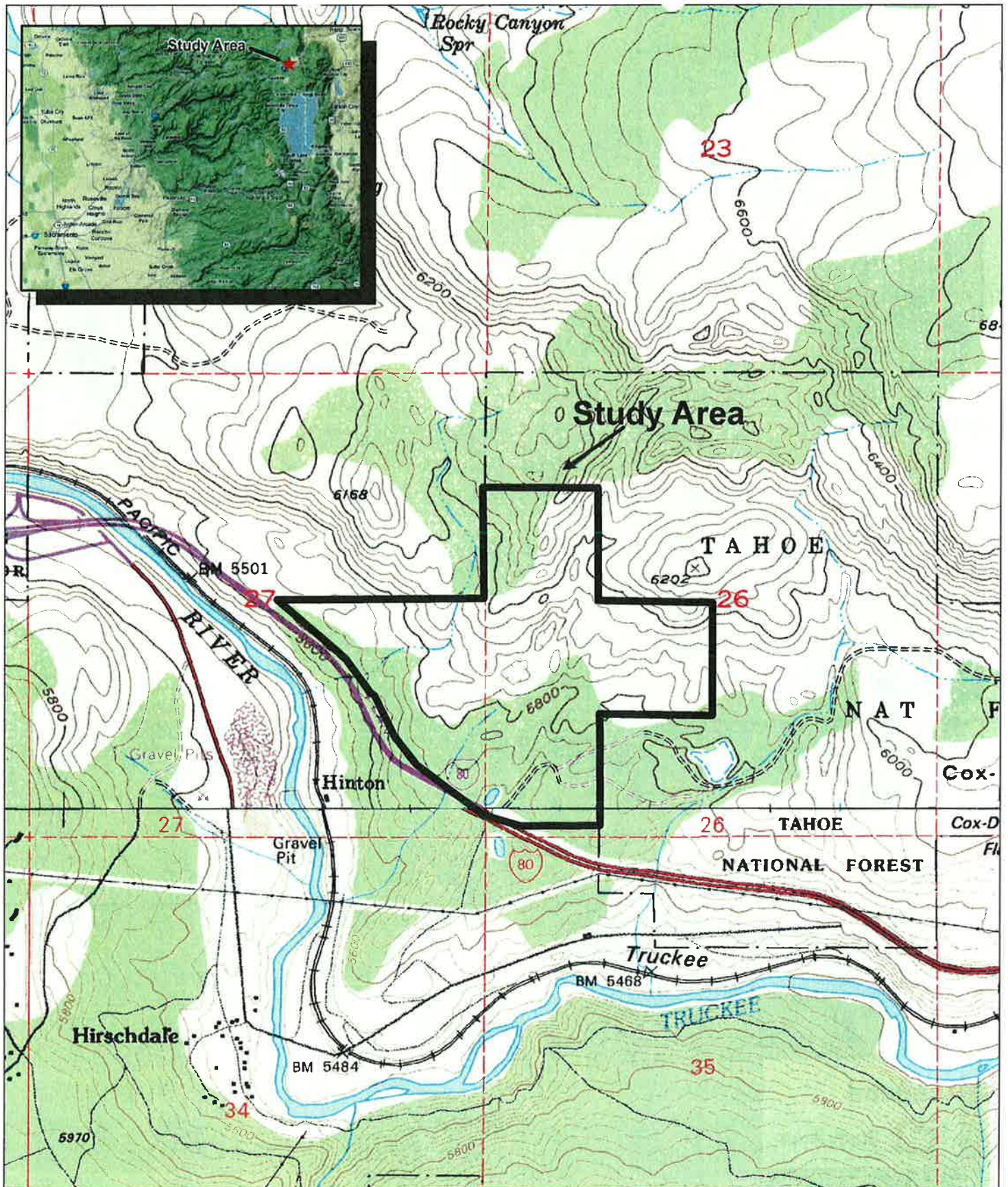
PUBLIC SCOPING MEETING:

Consistent with Section 21083.9 of the CEQA Statutes, a public scoping meeting will be held to solicit comments on the EIR. This meeting will be held on March 6, 2012 at Truckee Town Hall, 10183 Truckee Airport Road, Truckee, CA 96161 at 6:00 pm.

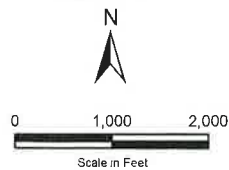
CONTACT:

Tod Herman, Senior Planner
Nevada County Community Development Agency
950 Maidu Avenue, Suite 170
Nevada City, CA 95959
Telephone: (530) 265-1257
Email: Tod.Herman@co.nevada.ca.us

Attachments:
Site and Vicinity Map
Aerial Photo
Mine Plan



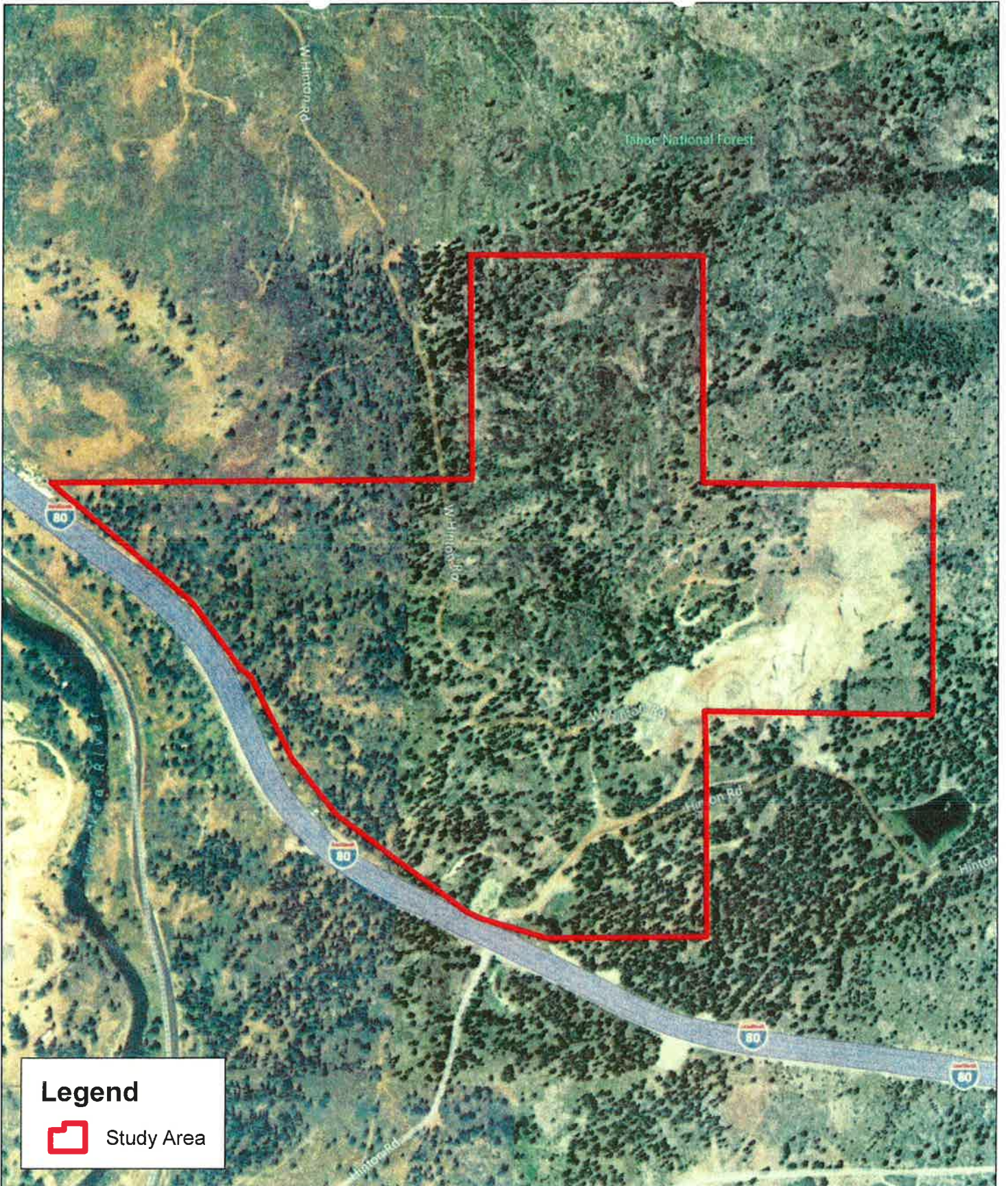
HELIX
Environmental Planning




Base map: Boca, CA, USGS
7.5 minute topographic quadrangle
Sections: 26 & 27
Township: 18N
Range: 17E

Figure 1 - Site & Vicinity Map

*Boca Quarry
Expansion Project*
Nevada County, CA




Legend


 Study Area

HELIX
Environmental Planning

N



0 500 1,000



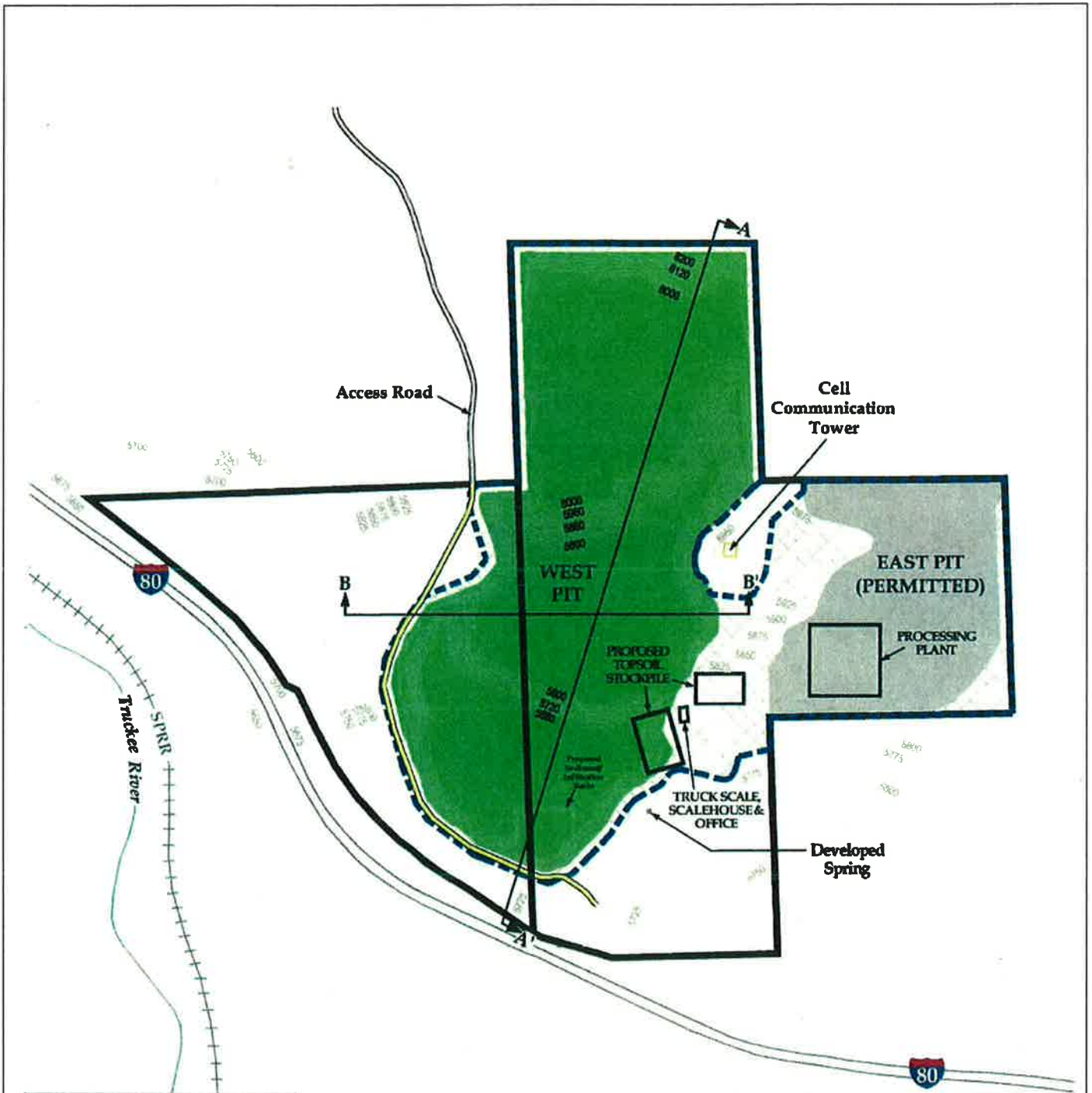
Scale in Feet

Aerial Photo:
Bing Maps, 2011.

Figure 2 - Aerial

*Boca Quarry
Expansion Project*

Nevada County, CA



Facilities and boundaries are approximate, although total acreage to be disturbed and reclaimed will be similar to that depicted.

Legend

- West Pit Mining Area
- East Pit (Permitted)
- Ultimate Disturbed Area

HELIX
Environmental Planning

N
↑
Not To Scale

Original Data Source:
Teichert Mine Planning Dept.

Figure 3 - Mine Plan
Boca Quarry Expansion Project
Nevada County, CA