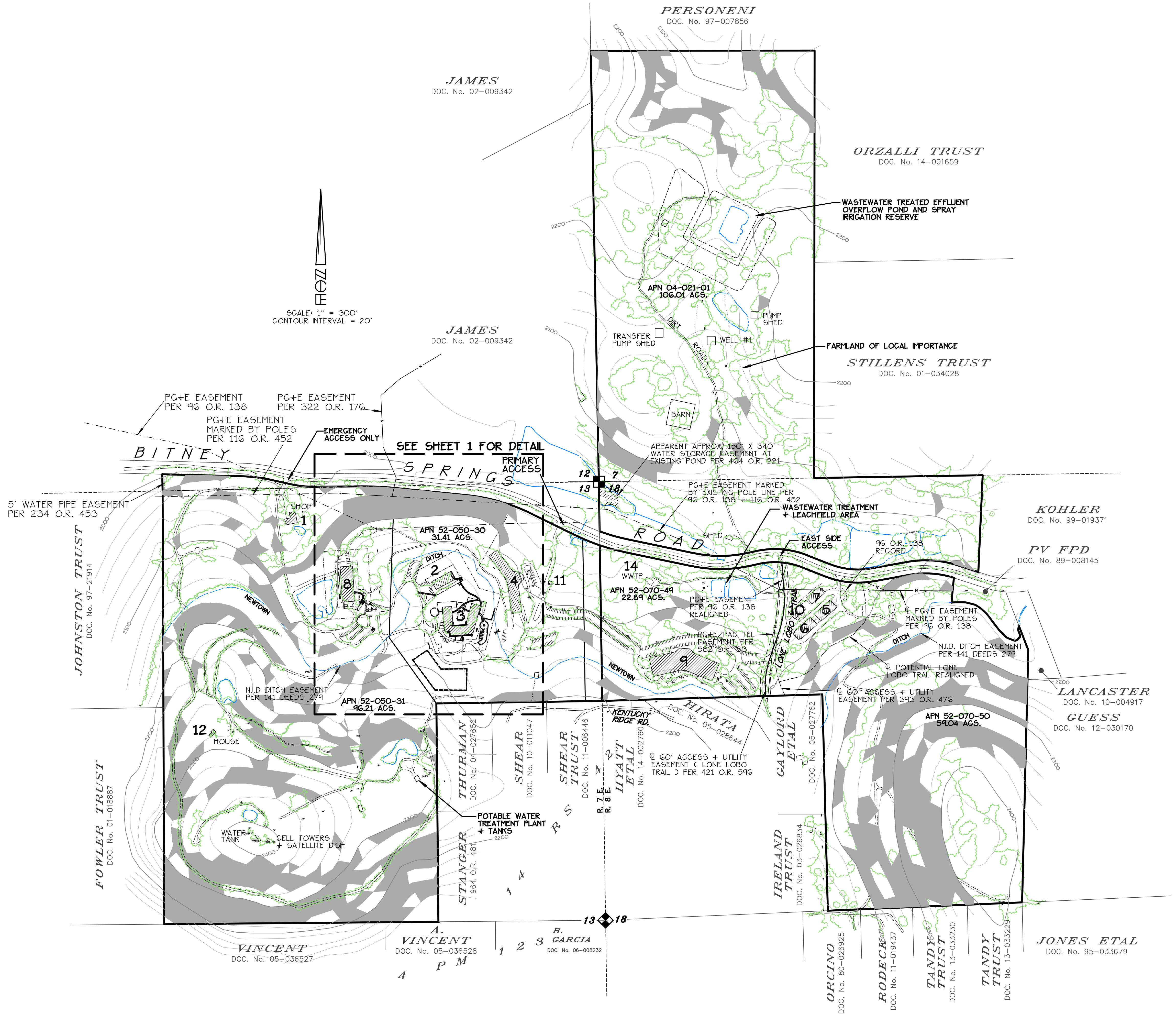


P:\Land Projects\2016\16-015 NCSA\Drawings\16-015 NCSA Master Plan.dwg, 11/11/2016 9:24:24 AM, 1:1



SCALE: 1" = 300'
CONTOUR INTERVAL = 20'

LEGEND

EXISTING CONTOUR	— 2200
EXISTING DRAINAGE FLOW	→
EXISTING A.C. ROAD	====
EXISTING DIRT ROAD	-----
EXISTING POWER POLE	⋄
EXISTING LIGHT POLE	⊗
EXISTING VEGETATION OR TREE COVERAGE	☼
EXISTING BUILDING AND NUMBER	▨ 5
ACCESSIBLE PARKING STALL	⊠
APPROXIMATE SLOPES GREATER THAN 30% (APPROXIMATE FROM USGS)	■
FARMLAND OF LOCAL IMPORTANCE	⋯

- NOTES:**
- SEE ACCOMPANYING TEXT FOR INFORMATION ON BUILDING TYPES AND USES.
 - PLEASE SEE ACCOMPANYING REPORTS FROM SAUERS ENGINEERING, INC. REGARDING THE ONSITE SEWER AND WATER SYSTEMS.

OVERALL SITE PLAN

DEVELOPMENT PERMIT PLN16-0044
COMPREHENSIVE MASTER PLAN
USE PERMIT SITE PLAN
FOR
NEVADA CITY SCHOOL OF THE ARTS
BEING A PORTION OF
S.E. 1/4 SEC. 12 + N.E. 1/4 SEC. 13, T. 16 N., R. 7 E., M.D.M.
WITHIN THE UNINCORPORATED TERRITORY OF
NEVADA COUNTY, CALIFORNIA
SCALE: 1" = 300' OCTOBER, 2016
NEVADA CITY ENGINEERING, INC.
505 COYOTE STREET • P.O. BOX 1437 • NEVADA CITY • CALIFORNIA
SHEET 2 OF 2 SHEETS